

Atglen Public Library

121 Main Street, PO Box 190

Atglen, PA 19310

(610) 593-6848

www.atglenpubliclibrary.org

Robbyn Kehoe, *Director*

POPULATION SERVED:

3,761

CUSTOMER VISITS:

16,384

TOTAL CIRCULATION:

45,193

TOTAL PROGRAMS:

470

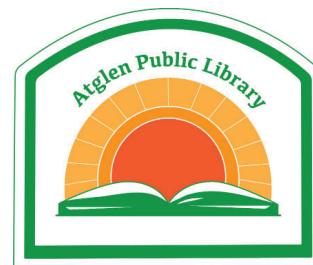
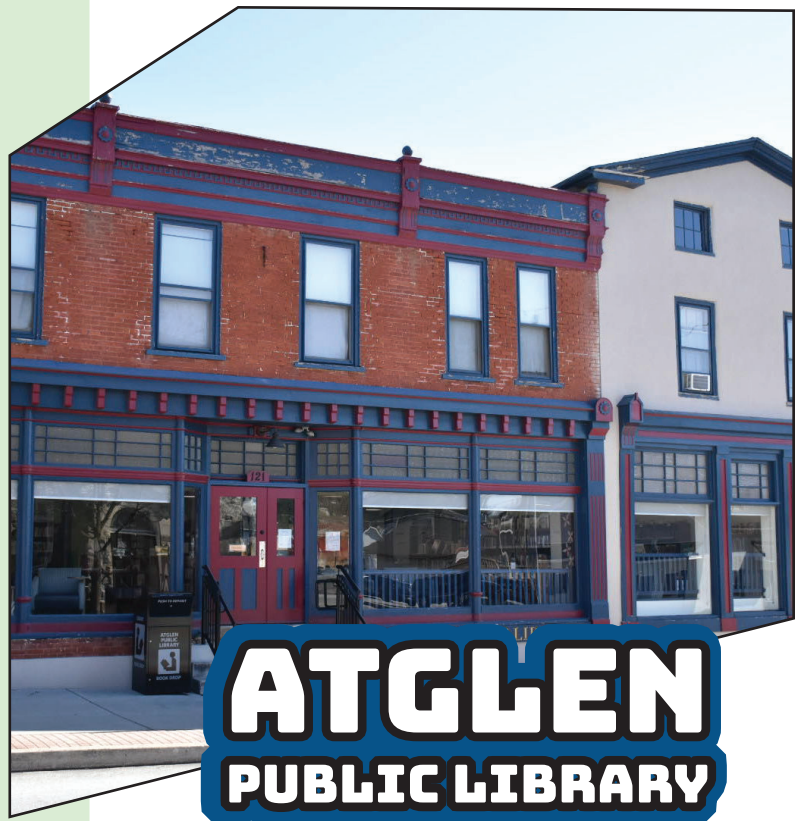
PROGRAM ATTENDANCE:

4,063

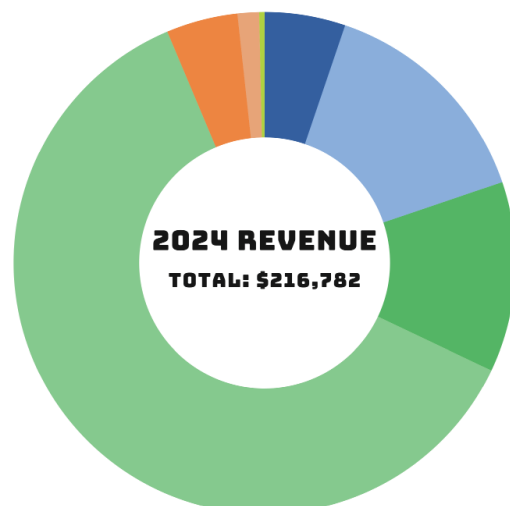
"I take my three-year-old to the Atglen Library every week. The staff have even played along with his request to be scanned with the books. So happy these individuals have created such a safe, playful, and sweet space for our family." ~ Hannah



Pinball STEM Activity



- Federal \$11,288
- State \$31,606
- County \$26,586
- Other \$133,552
- Borough of Atglen \$10,000
- West Sadsbury \$3,000
- West Fallowfield \$750



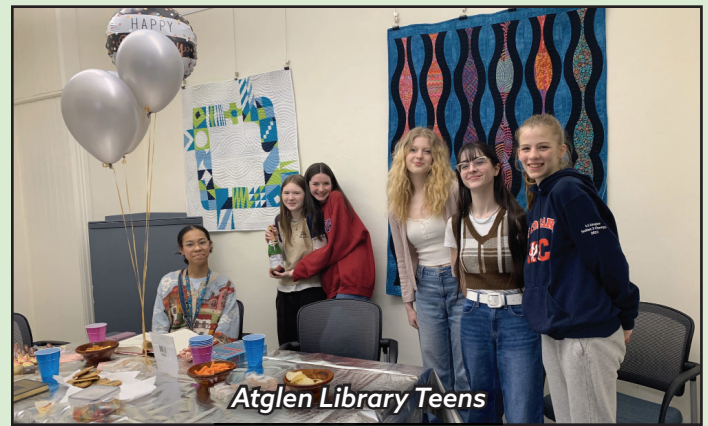
“FROM STORY TIME TO SENIORS” A LIBRARY FOR EVERY CHAPTER OF LIFE

“We are a tribe in that room!” Mother-infant pairs strengthen their bond and connect with fellow participants in our Itty Bitty Beats program, building a support network at this important time in family life. Parents and grandparents interact while the children learn early literacy skills in Story Time. These intergenerational connections foster an arc of wisdom and shared experience that benefit the community far beyond the library walls.

Many of our library friends attend several programs, with their children or grand-children and by themselves. Gail brings her youngest granddaughter to Music & Movement and her oldest granddaughter to Stitching in the Stacks, where they both crochet. Brittany brings her children to Monday Meetups and gets some adult conversation at Book Club. This wonderful Venn diagram of participants spreads knowledge and inspiration throughout the layers of community. Through early literacy to adult programs, we build a web of connections, sharing experiences, combatting social isolation, and strengthening our community.

“DRAFTING THE SEQUEL” INNOVATIVE FUNDING FOR LASTING IMPACT

We created Community Partnerships to foster sustainability. Local businesses commit generous multi-year support of the Library, enabling us to commit to new initiatives for lasting community impact. Last year we added an early literacy program and 15 staff hours. Our Partners benefit from Coffee & Conversation gatherings, building community amongst themselves. You can make a difference by supporting your library every year.



“UNIQUE AND UNITED” DIVERSE TALENTS, UNIFIED IMPACT

Collaborating with other organizations offers new opportunities for our community. Last summer we built functioning pinball machines with grade schoolers with cardboard, robotics, and a 3D printer from VGCUSA. We viewed the solar eclipse with NASA ambassadors and Ms. Kieffer’s ninth graders at Octorara Area Junior-Senior High School. Twice each year we learn about the night sky with Chester County Astronomical Society at Wolf’s Hollow County Park. Every month we provide outreach to the preschool classes at the YMCA Octorara Program Center, providing Story Time and a deposit collection to young children who otherwise would not be able to visit the library.

